

Slip resistance

Slip resistance of floor tiles

The EC directives on building products require floor coverings to be safe to use. This imposes the observance of special requirements in various areas where a danger of accidents is to be assumed.



The corresponding standards were drawn up by the social insurance body for occupational accidents ('Berufsgenossenschaft') and published in the form of specifications or guidelines. These standards include requirements pertaining to slip resistance leaflet BGR 181 "Floors in working rooms and work areas subject to a risk of slipping" for commercial areas and leaflet GUV-I 8527 "Floor coverings for wet barefoot areas" for barefoot areas.

Areas subject to a danger of slipping (e.g. circulation areas in public buildings, retail and wholesale premises, swimming pools, sanitary rooms) require slip-resistant floor coverings, e.g. consisting of glazed or unglazed vitreous tiles with a slightly rough,

rough or profiled surface. When small-format tiles are used, the high proportion of joints has a positive effect on the degree of slip resistance.

Slip-resistant coverings in publicly accessible areas are distinguished according to those that are walked over barefoot or in footwear. No regulations apply as yet in the area of private use, e.g. private bathrooms or kitchens.

The requirements stipulated by accident insurers are defined in the regulations mentioned below.

With our slip-resistant tiles, you will find the symbols  slip resistance in commercial areas,  slip resistance in barefoot areas and information about the relevant classification groups.

Slip resistance properties in commercial applications

Responsible institutions:

Hauptverband der gewerblichen Berufsgenossenschaften (main association of employers' liability insurance associations), Zentralstelle für Unfallverhütung und Arbeitsmedizin (central office for accident prevention and occupational medicine), Fachausschuss Bauliche Einrichtungen (technical committee structural installations), Bonn

Area of application:

Floors in work rooms and work areas where there is a risk of slipping

Regulations:

"UVV Allgemeine Unfallverhütungsvorschriften"
 "Merkblatt für Fußböden in Arbeitsräumen und Arbeitsbereichen mit Rutschgefahr", BGR 181 – October 2003 issue. Published by: Hauptverband der gewerblichen Berufsgenossenschaften (HVBG – main association of employers' liability insurance associations), Bonn

Test method:

DIN 51130 – Testing of floor coverings; determination of slip resistance; work rooms and work areas subject to higher risk of slipping.

Walking method:

sloping plane

Assessment groups:

	Lower limit value	Upper limit value
R9	6°	10°
R10	> 10°	19°
R11	> 19°	27°
R12	> 27°	35°
R13	> 35°	



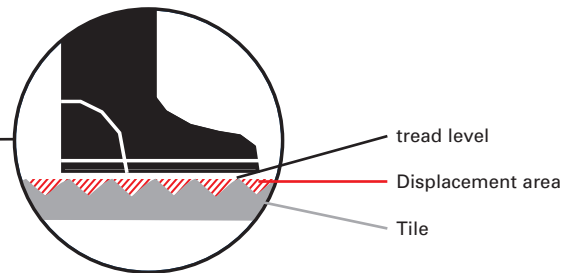
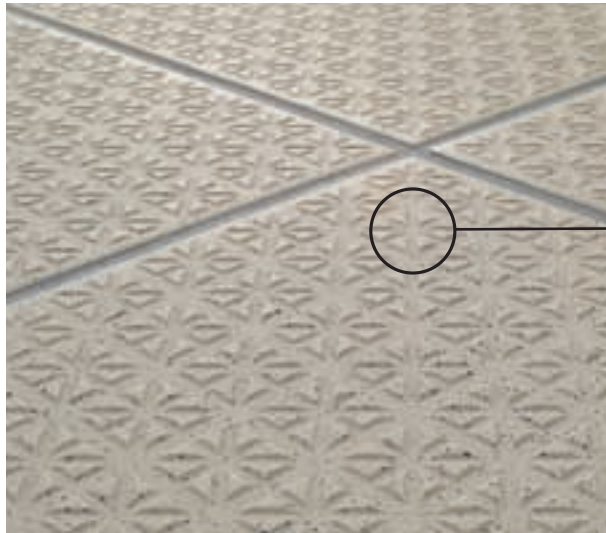
R9: 6° – 10° **R10:** 10° – 19° **R11:** 19° – 27° **R12:** 27° – 35° **R13:** > 35°

The slip resistance of tiles is tested on an inclined surface with a pre-determined slope angle and classified according to rating groups R9 to R13.

Slip resistance

Working rooms and areas where a displacement space is necessary under the walking level in order to discharge substances that are particularly conducive to slipping are indicated by a "V" in conjunction with a number specifying the minimum volume of the displacement space.

Designation of displacement space	Minimum volume of the displacement space below the walking area
V4	4 cm ³ /dm ²
V6	6 cm ³ /dm ²
V8	8 cm ³ /dm ²
V10	10 cm ³ /dm ²



The displacement area is the cavity (marked red) between the raised sections of the tile beneath the tread level.

Slip-resistant working rooms and areas in accordance with BGR 181

Working rooms and areas are classified according to five assessment groups on the basis of size and the risk of slipping. Coverings in group R9 are subject to the lowest requirements, while the most stringent requirements apply to group R13 coverings. Working rooms and areas where a displacement space is necessary under the walking level in order to discharge substances that are particularly conducive to slipping are indicated by a "V" in conjunction with a number specifying the minimum volume of the displacement space.

No.	Working rooms and traffic routes	Slipping risk assessment group (standard guideline)	Displacement area with number specifying minimum volume
0	General working rooms and areas *)		
0.1	Entrance areas, indoors **)	R9	
0.2	Entrance areas, outdoors	R11 or R10	V4
0.3	Stairs, indoors ***)	R9	
0.4	Stairs, outdoors	R11 or R10	V4
0.5	Sanitary (e. g. toilets, changing or washrooms) Break rooms (e.g. day rooms, canteens) Medical rooms	R10 R9 R9	
1	Manufacture of margarine, edible fats and oils		
1.1	Fat melting	R13	V6
1.2	Edible-oil refinery	R13	V4
1.3	Manufacture and packing of margarine	R12	
1.4	Manufacture and packing of edible fat, bottling of edible oil	R12	
2	Milk treatment and processing, cheese production		
2.1	Processing of fresh milk, including buttery	R12	
2.2	Cheese production, storage and packing	R11	
2.3	Ice cream manufacture	R12	
3	Manufacture of chocolates and confectionery		
3.1	Sugar boiling plant	R12	
3.2	Cocoa production	R12	
3.3	Preparation of raw mass	R11	
3.4	Production of slabs, hollow moulded forms and chocolates	R11	
4	Manufacture of breads and pastries (bakeries, cake and biscuit manufacturers)		
4.1	Preparation of dough	R11	
4.2	Areas where fats and liquid mixtures are processed	R12	
4.3	Washing-up rooms	R12	V4
5	Slaughtering, meat handling, meat processing		
5.1	Abattoir	R13	V10
5.2	Gut cleaning areas	R13	V10
5.3	Meat jointing	R13	V8
5.4	Sausage and cold meats kitchen	R13	V8
5.5	Boiled sausage area	R13	V8
5.6	Preserved sausage area	R12	V6
5.7	Sausage drying room	R12	
5.8	Gut storage	R12	
5.9	Curing, smoking room	R12	
5.10	Poultry processing	R12	V6
5.11	Slicing and packing area	R12	

Slip resistance

Slip-resistant working rooms and areas in accordance with BGR 181

No.	Working rooms and traffic routes	Slipping risk assessment group (standard guideline)	Displacement area with number specifying minimum volume
6	Handling and processing of fish, manufacture of delicatessen products		
6.1	Handling and processing of fish	R13	V10
6.2	Manufacture of delicatessen products	R13	V6
6.3	Manufacture of mayonnaise	R13	V4
7	Preparation and processing of vegetables		
7.1	Manufacture of sauerkraut	R13	V6
7.2	Manufacture of canned vegetables	R13	V6
7.3	Sterilisation areas	R11	
7.4	Rooms in which vegetables are prepared for processing.	R12	V4
8	Wet areas in food and drink manufacture		
8.1	Storage and fermenting cellar	R10	
8.2	Bottling, fruit juice manufacture	R11	
9	Kitchens, dining rooms		
9.1	Gastronomic kitchens (restaurant and hotel kitchens)		
9.1.1	up to 100 covers per day	R11	V4
9.1.2	more than 100 covers per day	R12	V4
9.2	Commercial kitchens in homes, schools, day nurseries, sanatoriums	R11	
9.3	Commercial kitchens in hospitals and clinics	R12	
9.4	Large-scale commercial kitchens in canteens, district kitchens	R12	V4
9.5	Fast food and snack bar kitchens	R12	V4
9.6	Defrosting and re-heating kitchens	R10	
9.7	Tea and coffee kitchens, B+B kitchens, ward kitchens	R10	
9.8	Washing-up areas		
9.8.1	Washing-up areas for 9.1, 9.4, 9.5	R12	V4
9.8.2	Washing-up areas for 9.2	R11	
9.8.3	Washing-up areas for 9.3	R12	
9.9	Dining rooms, guest rooms, canteens incl. serving areas	R9	
10	Cold storage rooms, deep freeze rooms and depots		
10.1	For non-packaged goods	R12	
10.2	For packaged goods	R11	
11	Sales areas and shops		
11.1	Receiving room for meats	R11	
11.1.1	For non-packaged goods	R10	
11.1.2	For packaged goods	R11	
11.2	Receiving room for fish		
11.3	Serving area for meats and cold cuts		
11.3.1	For non-packaged goods	R11	
11.3.2	For packaged goods	R10	
11.4	Serving area for breads and pastries, non-packaged goods	R10	
11.5	Serving area for dairy and delicatessen products, non-packaged goods	R10	
11.6	Serving area for fish		
11.6.1	For non-packaged goods	R12	
11.6.2	For packaged goods	R11	
11.7	Serving areas other than 11.3 – 11.6	R9	
11.8	Meat preparation room		
11.8.1	For meat preparation other than covered in 5.	R12	V8
11.8.2	For meat processing other than covered in 5.	R11	
11.9	Flower arranging rooms and areas	R11	
11.10	Sales areas with fixed ovens		
11.10.1	For the production of breads and pastries	R11	
11.10.2	For the baking of prepared breads and pastries	R10	
11.11	Sales areas with fixed deep-fat fryers or grills	R12	V4
11.12	Sales areas, customer-frequented areas	R9	
11.13	Preparation areas for food for self-service sale	R10	
11.14	Cash till, packing areas	R9	
11.15	Sales areas outdoors	R11 or R10	V4
12	Public health service rooms		
12.1	Disinfection areas (wet)	R11	
12.2	Sterilisation areas	R10	
12.3	Excrement areas, sink rooms, unclean nursing rooms	R10	
12.4	Pathology rooms	R10	
12.5	Rooms for medicinal baths, hydrotherapy, fango preparation	R11	
12.6	Washrooms for operating theatres, plaster casting rooms	R10	
12.7	Sanitary rooms, ward bathrooms	R10	
12.8	Rooms for medical diagnosis and therapy, massaging rooms	R9	
12.9	Operating theatres	R9	
12.10	Wards with hospital rooms and corridors	R9	
12.11	Medical practices, day clinics	R9	
12.12	Dispensing chemist's	R9	
12.13	Laboratories	R9	
12.14	Hairdresser's	R9	
13	Laundries		
13.1	Rooms with continuous-run washing machines or centrifugal washing machines	R9	
13.2	Rooms in which the laundry is removed from the machine dripping wet	R11	
13.3	Rooms for ironing and pressing	R9	
14	Feed concentrate production		
14.1	Dry feed production	R11	
14.2	Feed concentrate production using fat and water	R11	V4
15	Manufacture of leather goods, textiles		
15.1	Water workshops in tanneries	R13	
15.2	Areas with fleshing machines	R13	V10
15.3	Areas where glued leather occurs	R13	V10
15.4	Grease room for the manufacture of seals	R12	
15.5	Dye works for textiles	R11	
16	Paint-shops		
16.1	Wet rubbing down areas	R12	V10
17	Ceramics industry		
17.1	Wet-grinding (for ceramic material)	R11	
17.2	Mixers, working with materials such as tar, pitch, graphite, synthetic resins	R11	V6
17.3	Presses (Forming), working with materials such as tar, pitch, graphite, synthetic resin	R11	V6
17.4	Casting areas	R12	
17.5	Glazing areas	R12	

Slip resistance

Slip-resistant working rooms and areas in accordance with BGR 181

No.	Working rooms and traffic routes	Slipping risk assessment group (standard guideline)	Displacement area with number specifying minimum volume
18	Treatment and processing of glass and stone		
18.1	Stone cutting, stone grinding areas	R11	
18.2	Glass moulding of hollow glass, container glass, structural glass	R11	
18.3	Grinding areas for hollow glass, sheet glass	R11	
18.4	Processing of insulating glass Working with desiccants	R11	V6
18.5	Packaging, dispatch of sheet glass, Working with anti-blocking agents	R11	V6
18.6	Etching and acid polishing units for glass	R11	
19	Cement works		
19.1	Cement washing area	R11	
20	Storage rooms		
20.1	Storage rooms for oils and fats	R12	V6
20.2	Storage rooms for packaged foods	R10	
20.1	Storage rooms outdoors	R11 or R10	V4
21	Chemical and thermal treatment of iron, metal and glass		
21.1	Pickling shops	R12	
21.2	Hardening shops	R12	
21.3	Laboratories	R11	
22	Metal workshops		
22.1	Electroplating rooms	R12	
22.2	Grey iron processing	R11	V4
22.3	Mechanical processing areas (e.g. lathe shop, milling shop), punching department, pressroom, drawing mill (pipes, wires) and areas with increased use of oil and lubricating materials	R11	V4
22.4	Part cleaning areas, steaming areas	R12	
23	Vehicle maintenance workshop		
23.1	Repair and maintenance shop	R11	
23.2	Repair and inspection pit	R12	V4
23.3	Car wash, washing areas	R11	V4
24	Aircraft maintenance workshops		
24.1	Hangars	R11	
24.2	Repair hangars	R12	
24.3	Washing areas	R11	V4
25	Sewage works		
25.1	Pumping rooms	R12	
25.2	Rooms for sludge de-watering facilities	R12	
25.3	Rooms for raking facilities	R12	
25.4	Standing areas of workplaces, working and maintenance platforms	R12	
26	Fire stations		
26.1	Vehicle standing areas	R12	
26.2	Rooms for hose servicing equipment	R12	
27	Banks		
27.1	Reception areas	R9	
28	Parking areas		
28.1	Garages, multi-storey and underground car parks not subject to the effects of the weather *****)	R10	
28.2	Garages, multi-storey and underground car parks subject to the effects of the weather	R11 or R10	V4
28.3	Parking areas outdoors	R11 or R10	V4
29	Schools and kindergardens		
29.1	Entrance areas, corridors, recreation halls	R9	
29.2	Classrooms, group rooms	R9	
29.3	Stairs	R9	
29.4	Toilets, washrooms	R10	
29.5	Cookery rooms in schools (See no. 9, too)	R10	
29.6	Kitchens in kindergardens (See no. 9, too)	R10	
29.7	Machine rooms for woodwork	R10	
29.8	Special rooms for woodwork etc.	R10	
29.9	Playgrounds	R11 or R10	V4
30	Outside traffic routes		
30.1	Paths	R11 or R10	V4
30.2	Loading ramps		
30.2.1	covered	R11 or R10	V4
30.2.2	not covered	R12	V4
30.3	Sloping ramps (e.g. for wheelchairs, loading bridges)	R12	
30.4.1	Refuelling areas	R12	
30.4.2	Refuelling areas, covered	R11	

*) For floors in wet barefoot areas see GUV information "Bodenbeläge für nassbelastete Barfußbereiche" (GUV-1 8527)

**) Entrance areas in accordance with number 0.1 are areas accessed directly from outside and that may be wet if conditions are wet outside. For adjoining areas, see section 3.4 – BGR181.

***) Stairs in accordance with number 0.3 are those that may be wet if it is wet outside. For adjoining areas, see section 3.4 – BGR181.

*****) If a uniform floor covering has been installed everywhere, on the basis of a hazard analysis (taking account of the cleaning method, the work flows and the amount of substances on the floor that are particularly conducive to slipping), the displacement area can be reduced to V4.

*****) Those pedestrian areas that are not affected by the risk of slipping as a result of the effects of the weather, such as driving rain or water that has been brought in from outside.

Slip resistance

Slip-resistant working rooms and areas in accordance with BGR 181

If floor coverings of different slip resistance are used in connected work rooms or areas, only floor coverings of two consecutive classification groups should be used next to each other, e.g. classification groups R10 and R11 or R11 and R12 etc. This also applies to corridors and stairs adjoining wet areas such as e.g. sanitary rooms.

In connected work places with differing slip risks, where employees move from one work place to the other, the same floor covering of the higher classification group should be used for the entire area.

To facilitate cleaning, smooth, non-profiled floor coverings can be used in areas that cannot be walked on.

Such areas include, for example, along the walls up to a distance of 15 cm, in corners and under machines and installations which are firmly fixed to the floor.

A rounded edge between the walls and floor e.g. cove skirting is easier to clean than a rectangular edge

Slip resistance in private areas

With regard to slip resistance, floor coverings in private areas are not subject to standard regulations. Independent of that, however, it is recommended to choose slip-resistant tiles according to your personal safety requirements.

Slip resistance

Slip-resistance properties in barefoot areas

Responsible institutions:

Bundesverband der Unfallkassen, Munich

Area of application:

Barefoot areas in swimming baths and preliminary washing rooms at sports centres for which the statutory accident insurance agencies are responsible.

Regulations:

“Merkblatt Bodenbeläge für nassbelastete Barfußbereiche” – GUV-I 8527 July 1999 issue (updated version July 2007) Published by: Bundesverband der Unfallkassen, Munich

Test method:

DIN 51097; Testing of floor coverings; determination of slip resistance; barefoot areas exposed to wet. Barefoot areas:




Walking method:

sloping plane

Categories :

The slip resistance of tiles is tested on an inclined surface with a pre-determined slope angle and classified according to rating groups **A** to **C**.

Classification groups and areas of application:

Classification group	Lower limit value	Upper limit value	Bereiche
 A	12°	18°	Barefoot hallways (mainly dry) Individual and group changing rooms with lockers Pool floors in the non-swimmer areas, where the water level exceeds 80 cm Sauna and relaxation areas (mainly dry)
 B	> 18°	24°	Barefoot hallways, if not classified in A Showers Area surrounding the disinfectant sprayers Pool surrounds Pool floor in the non-swimmer areas, where the water level is less than 80 cm Pool floor in the non-swimmer areas in the tide effect pool Lift slab floors Paddling pools Steps and ladders outside the pool area Sauna and relaxation area, provided they are not assigned to A
 C	> 24°		Steps and ladders leading into the water Stairways leading to diving boards and water slides Foot basins Inclined pool borders